

Preset Layers

- MapBuilder Topo
- 7.5' Topo Maps
- Forest Service
- Aerial Topo Hybrid
- Hybrid Satellite
- Slope Angle Shading

Markers

- Big Meadows Trailhead To Weaver Lake
- Marvin Pass Trailhead Prkg. Lot
- Area where to park vehicles. Then approx. 1 mile hike to High Sierra Camp.
- Mitchell Peak
- Rowell Meadow
- Sequoia High Sierra Camp
- Seville Lake
- Weaver Lake

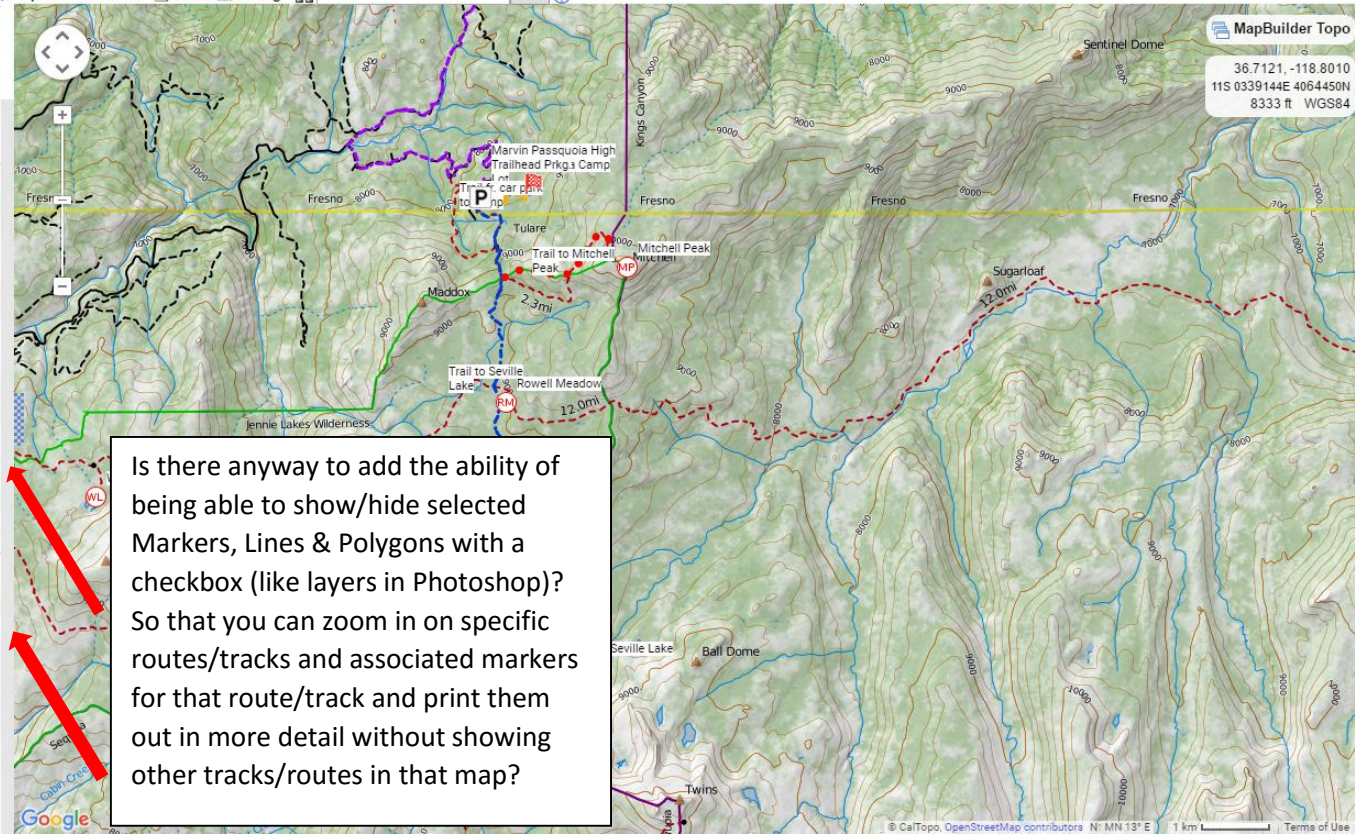
Bulk Ops

Lines & Polygons

- Trail fr. car park to camp
- Trail to Cedar Grove/Lookout
- Trail to Mitchell Peak
- Trail to Seville Lake

Bulk Ops

+ Add New Object
+ Add New Layer



Is there anyway to add the ability of being able to show/hide selected Markers, Lines & Polygons with a checkbox (like layers in Photoshop)? So that you can zoom in on specific routes/tracks and associated markers for that route/track and print them out in more detail without showing other tracks/routes in that map?

MapBuilder Topo
36.7121, -118.8010
11S 0339144E 4064450N
8333 ft WGS84